

Melbourne Museum of Printing

“The Tangible and Intangible Heritage of Printing and Related Arts”



LITHOGRAPHY

TYPESETTING FOR LITHO

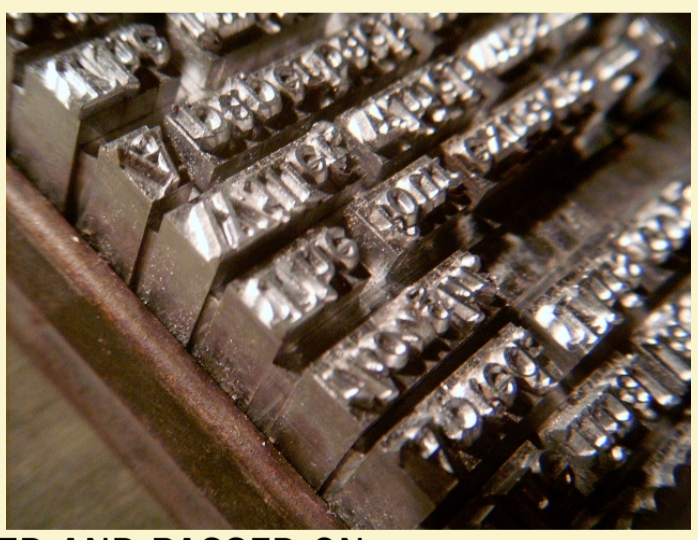
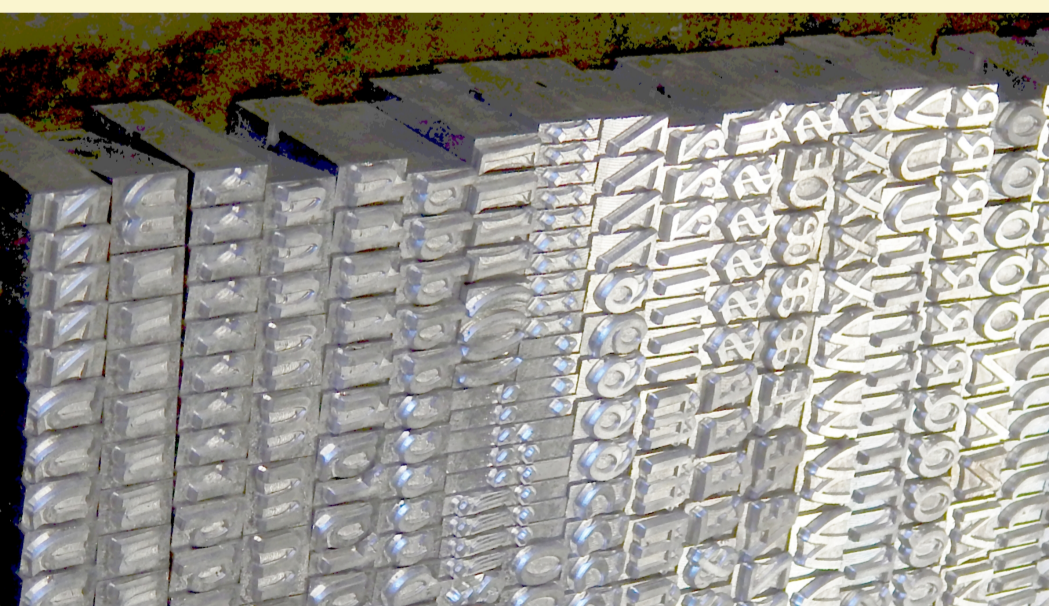
“5%”

LETTERPRESS

LETTERPRESS TYPESETTING

SEE THIS IMAGE BETTER, with extra images and descriptions, at : mmop.org.au/showroom

THE MAIN “SHOWROOM” AT MMOP GIVES A TASTE OF MANY THEMES, AND REPRESENTS ABOUT 5% OF THE TOTAL COLLECTION.

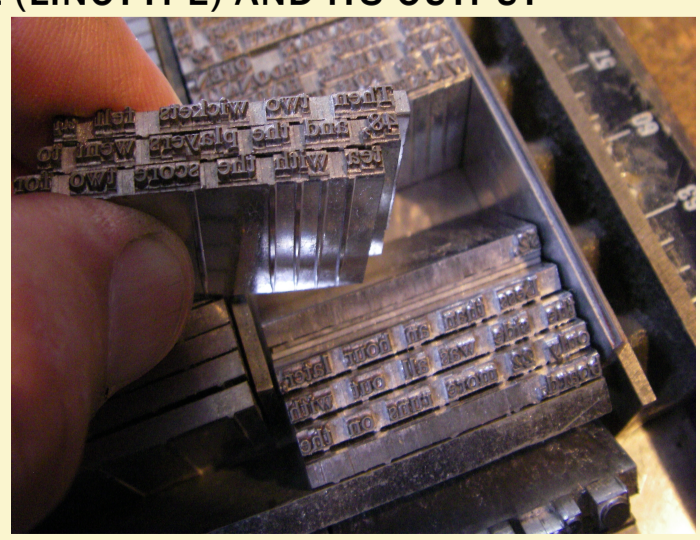


THE ANCIENT CRAFT OF TYPESETTING BY HAND IS PRACTICED AND PASSED ON MECHANICAL TYPESETTING MACHINE (LINTYPE) AND ITS OUTPUT THEY LEARN BETTER BY HAND

NEW TYPE FROM MMOP's FOUNDRY
MMOP supplies universities and museums with type and other needs.

MELBOURNE MUSEUM OF PRINTING
P.O. BOX 555, FOOTSCRAY, VIC 3011
mmop.org.au director@mmop.org.au

ALL TEXT AND IMAGES COPYRIGHT
mmop.org.au/copyright.htm



IT'S TRUE! There was printing before computers.